



VISIT

the FLORIDA MUSEUM



See Science Come to Life

Enjoy hundreds of exotic butterflies in a rainforest setting, witness a South Florida Calusa Indian welcoming ceremony, experience a life-size limestone cave and see a mammoth and mastodon from the last ice age. Located on the University of Florida campus in Gainesville, the Florida Museum is one of the nation's top five natural history museums.

Something for Everyone

Year-round, all ages can experience award-winning exhibits, fascinating science programs, educational events and lectures. Visit floridamuseum.ufl.edu/calendar for upcoming events.

Enjoy Membership Benefits

Florida Museum Associates and Curators Society members receive **FREE** *Butterfly Rainforest* and featured exhibit admission, invitations to exclusive receptions, events and guest lectures, free or reduced admission to more than 300 museums worldwide and discounts in the Museum gift shops. For more information, visit floridamuseum.ufl.edu/join or call 352-273-2047.

Exciting Volunteer Opportunities

Volunteers ages 12 and older serve throughout the Museum. Whether working in the research collections behind-the-scenes, greeting guests or leading school groups, volunteers are vital to the Museum's mission. For more information or to download an application, visit floridamuseum.ufl.edu/volunteers.

Host Your Event at the Museum!

Looking for something different for your next special event? The Museum offers a unique venue for banquets, parties, receptions, weddings and more.

For more information, visit floridamuseum.ufl.edu/rentals, email rentals@flmnh.ufl.edu or call 352-273-2045.



The Museum is located on the University of Florida campus in Gainesville.



Hours

Monday-Saturday, 10 a.m. to 5 p.m.

Sunday, 1 to 5 p.m.

Closed Thanksgiving, Christmas Eve & Christmas Day.

Admission & Parking

The Museum's exhibits are **FREE** with the exception of the *Butterfly Rainforest* and featured exhibits. Parking is \$4 per day (cash only), 8:30 a.m.-3:30 p.m., Monday through Friday (no charge after 3:30 p.m.), and free on weekends and state and university holidays. Visit floridamuseum.ufl.edu/visit for more information.

Tours

Planning a group or school tour?

Visit floridamuseum.ufl.edu/groups or call 352-273-2027.

Looking for a Unique Gift?

The Museum Collectors Shop and Butterfly Gift Shop offer unique gifts for children and adults including a great selection of educational and science-related items. Call 352-273-2041 for more information.

The shops are open during Museum hours.



FLORIDA MUSEUM™

floridamuseum.ufl.edu

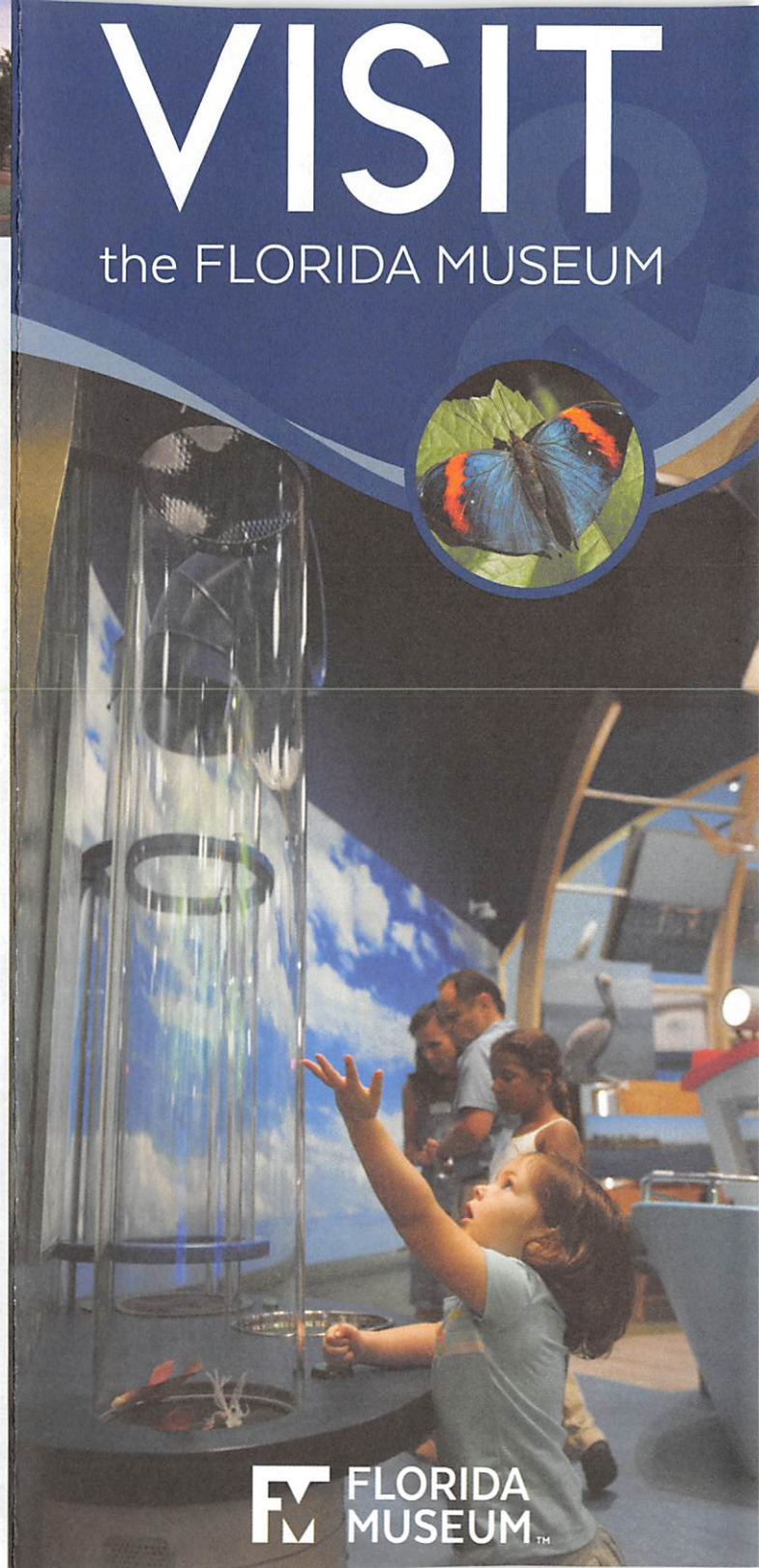
University of Florida Cultural Plaza

3215 Hull Road • P.O. Box 112710

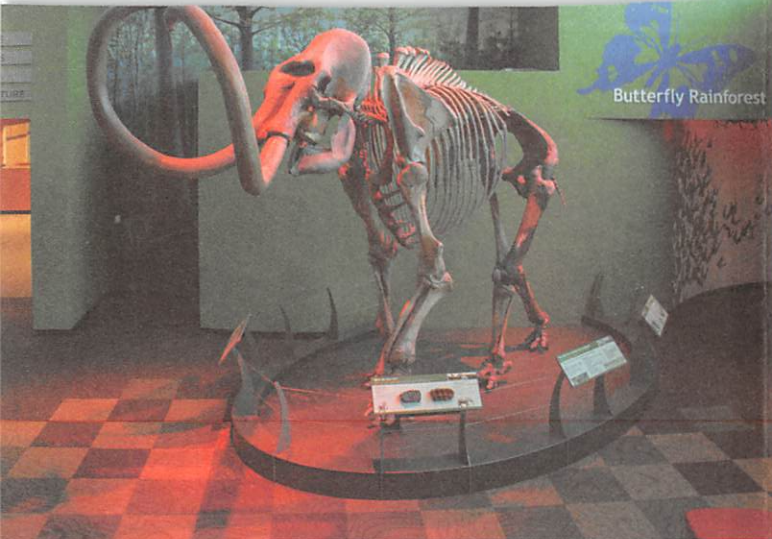
Gainesville, FL 32611-2710 • 352-846-2000



02/2018 250M



FLORIDA MUSEUM™



Florida Museum Exhibits



Butterfly Rainforest & the McGuire Center for Lepidoptera & Biodiversity

Stroll through this screened, outdoor enclosure with tropical plants and hundreds of living butterflies. View thousands of Lepidoptera species on the “Wall of Wings” and see scientists working in the Butterfly Rearing Lab and research labs. The McGuire Center is the largest facility dedicated to butterfly, moth and global biodiversity research and education, and houses one of the world’s largest collections of Lepidoptera specimens.



Florida Fossils: Evolution of Life & Land

Experience the last 65 million years of Florida’s history and walk through time beginning with the Eocene, when the state was underwater, to the Pleistocene, when the first humans arrived 14,000 years ago. View the diversity of life from Florida’s past with more than 500 fossils. See many skeletons of extinct animals including a bear dog, jaguar, giant sloths and the ferocious terror bird.



Our Energy Future

Explore hands-on activities about energy consumption and conservation. Discover how much energy we use daily and how individual behaviors can make a difference. Learn about renewable energy and its future potential for Florida.



Northwest Florida: Waterways & Wildlife

Follow water as it flows through the unique environments of northwest Florida, the most biodiverse region of the state. Explore a hardwood hammock featuring a life-size limestone cave, a seepage bog with carnivorous plants, a Native American trading scene and more.



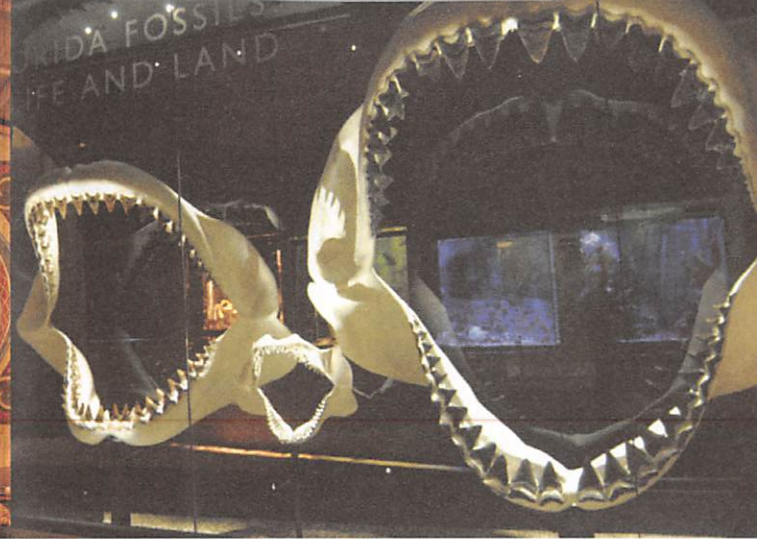
South Florida People & Environments

Travel underwater and view larger-than-life marine creatures, visit the house of a Calusa leader and walk along a boardwalk through a mangrove forest to experience the story of South Florida’s native people and the environments that supported them.



Exploring Our World

Learn about current Florida Museum and UF research initiatives in the science, technology, engineering and math fields, as well as the Museum’s more than 100-year history through videos, photographs and discovery drawers featuring objects from the world-class collections of more than 40 million specimens.



Florida Wildflower & Butterfly Garden

This outdoor demonstration garden showcases Florida’s native wildflowers and their importance as host and nectar plants for Florida’s native butterflies and other pollinators.



Beverly & Jon Thompson Discovery Zone

With a vast array of specimens, this new exhibit designed for children 8 and under includes opportunities for the entire family to discover and learn together.

Butterfly Plant Sale

Turn your garden into a butterfly paradise with Florida-friendly plants sold on Friday, Saturday and Sunday from early spring through fall. The Museum sale includes more than 150 host, native and nectar plants featuring a selection of at least 25 different species. Visit floridamuseum.ufl.edu/plant-sales for more information.

The Florida Museum of Natural History inspires people to value the biological richness and cultural heritage of our diverse world and make a positive difference in its future.

**INSPIRING PEOPLE
TO CARE ABOUT
LIFE ON EARTH**

